



Cadastral and Real Estate Advertising Office TULCEA
Tulcea Real Estate Cadastre and Publicity Office

**EXTRACT OF THE LAND
REGISTER CERTIFICATE
FOR INFORMATION**

Land Certificate No. 53539 Tulcea

Translation from Romanian

Request no.	76802
Day	04
Month	07
Year	2023

Verification code
100146094253



A. A. Part I. Property description

land within the
BUILT-UP AREA

Address: Loc. Tulcea, Str Pacii, Nr. FN, Jud. Tulcea, 1 MAI PARK

Item no.	Cadastral number Topographic number	Surface* (sqm)	Observations / References
A1	53539	From the documents: 1,525 Measured: 1,438	Fenced land; Building bounded by the sidewalk.

B. B. Part II. Owners and documents

Entries regarding property rights and other real rights		References
76802 / 04/07/2023		
Normative Act no. 1360, from 27/12/2001 issued by the GOVERNMENT OF ROMANIA; Administrative Act no. 9244, dated 29/06/2013 issued by TULCEA TOWN HALL; Administrative Act no. 125, dated 12/07/2001 issued by the LOCAL COUNCIL OF TULCEA;		
B2	Tabulation, PROPERTY right, acquired by law, current share 1/1	A1
1) TULCEA MUNICIPALITY, CIF (Fiscal Identification Code): 4321429, public domain		

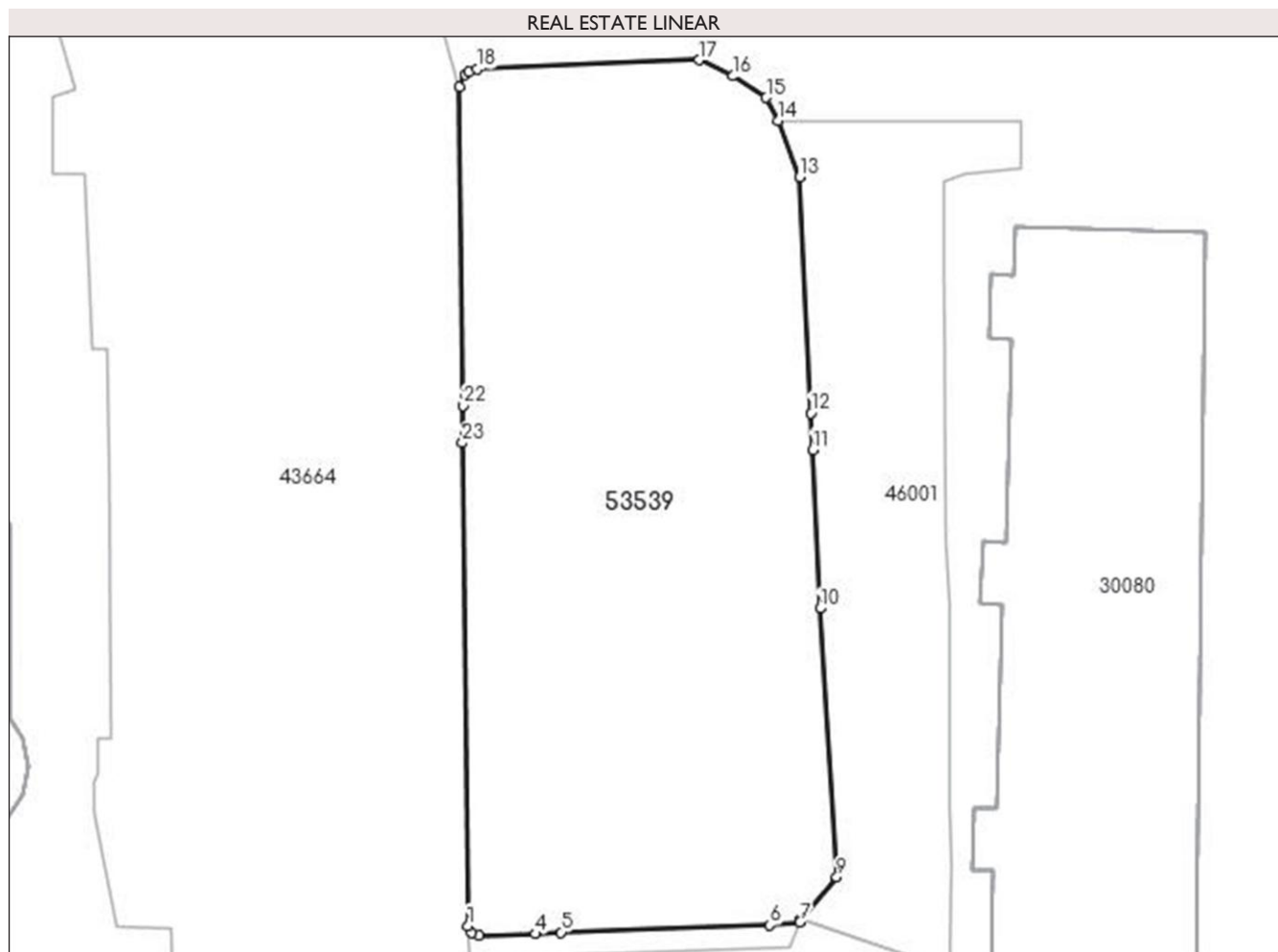
C. B. Part III. ENCUMBRANCES.

Entries regarding dismemberment of property rights, real rights of guarantee and encumbrances	References
NOT EXISTING	

Annex No. 1 to Part I**Land**

Cadastral no.	Surface (sqm)*	Observations / References
53539	From the documents: 1,525 Measured: 1,438	Building bounded by the sidewalk.

*The surface is determined in the Stereo 70 projection plane.

**Land related data**

Item	Usage category	Land with...	Surface (sqm)	Strip land	Lot	Topographic al no.	Observations / References
1	yards constructions	YES	27	-	1	-	
2	yards constructions	YES	22	-	1/1	-	
3	yards constructions	YES	21	-	1/2	-	
4	yards constructions	YES	139	-	1/3	-	
5	yards constructions	YES	330	-	1/4	-	
6	yards constructions	YES	175	-	1/5	-	
7	yards constructions	YES	236	-	1/6	-	
8	yards constructions	YES	30	-	1/7	-	
9	road	YES	458	-	2	-	

Segments length**1) The segment length values are obtained from the plan projection.**

Start point	End point	Segment length (** (m))
1	2	0,558
3	4	3,908
5	6	14,446
7	8	0,201
9	10	18,621
11	12	2,534
13	14	4,18
15	16	2,73
17	18	15,407
19	20	0,333
21	22	22,019
23	1	33,403

Start point	End point	Segment length (** (m))
2	3	0,545
4	5	1,773
6	7	2,092
8	9	3,834
10	11	10,987
12	13	16,349
14	15	1,782
16	17	2,595
18	19	0,559
20	21	0,984
22	23	2,579

** ** Segment lengths are determined in the Stereo 70 projection plane and are rounded to 1 millimeter..

*** The distance between the points is made up of cumulative segments that are smaller than the value of 1 millimeter.

I certify that this extract corresponds to the positions in force in the original land register, kept by this office.

This extract from the land register is valid for the authentication by the public notary of the legal documents by which the real rights are extinguished as well as for the succession debate, and the information presented is susceptible to any modification, under the conditions of the law.

The fee of 0 RON, -, was paid for the real estate advertising service with code no. 231, 241.

Settlement date,
05-07-2023Registrar Assistant,
CAMELIA PANTELEMON

Referee,

Issue date,
/ /(Stamp and
signature)(Stamp and
signature)